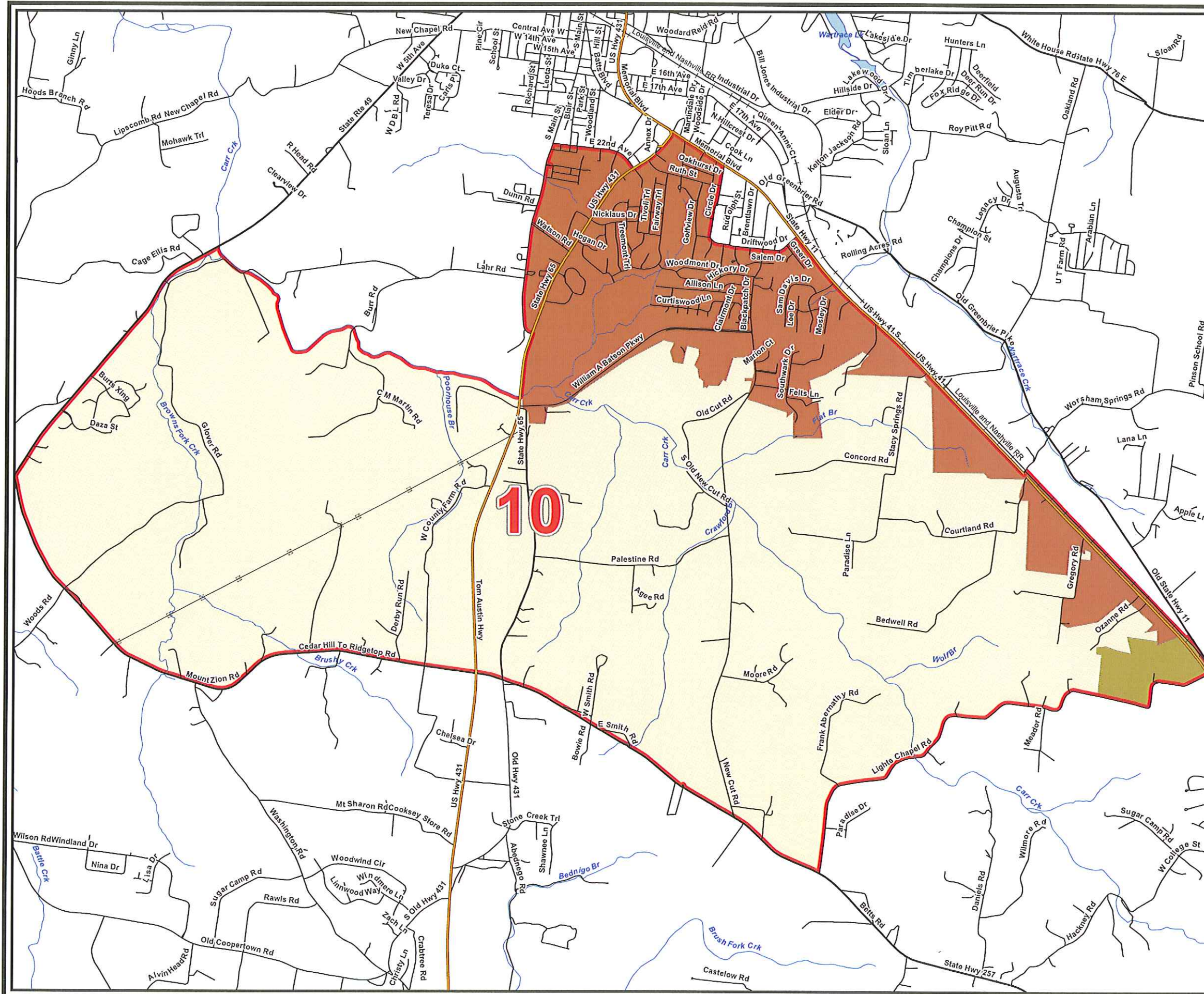


Robertson County Option A

County Commission District 10



- Interstates
 - U.S. Highway
 - State Highway
 - Local Roads
 - Railroads
 - Stream
 - Powerline (Incomplete)
 - Districts
 - Lakes / Rivers
- City, Town**
- Adams
 - Cedar Hill
 - Coopertown
 - Cross Plains
 - Greenbrier
 - Millersville
 - Orlinda
 - Portland
 - Ridgetop
 - Springfield
 - White House
 - County

