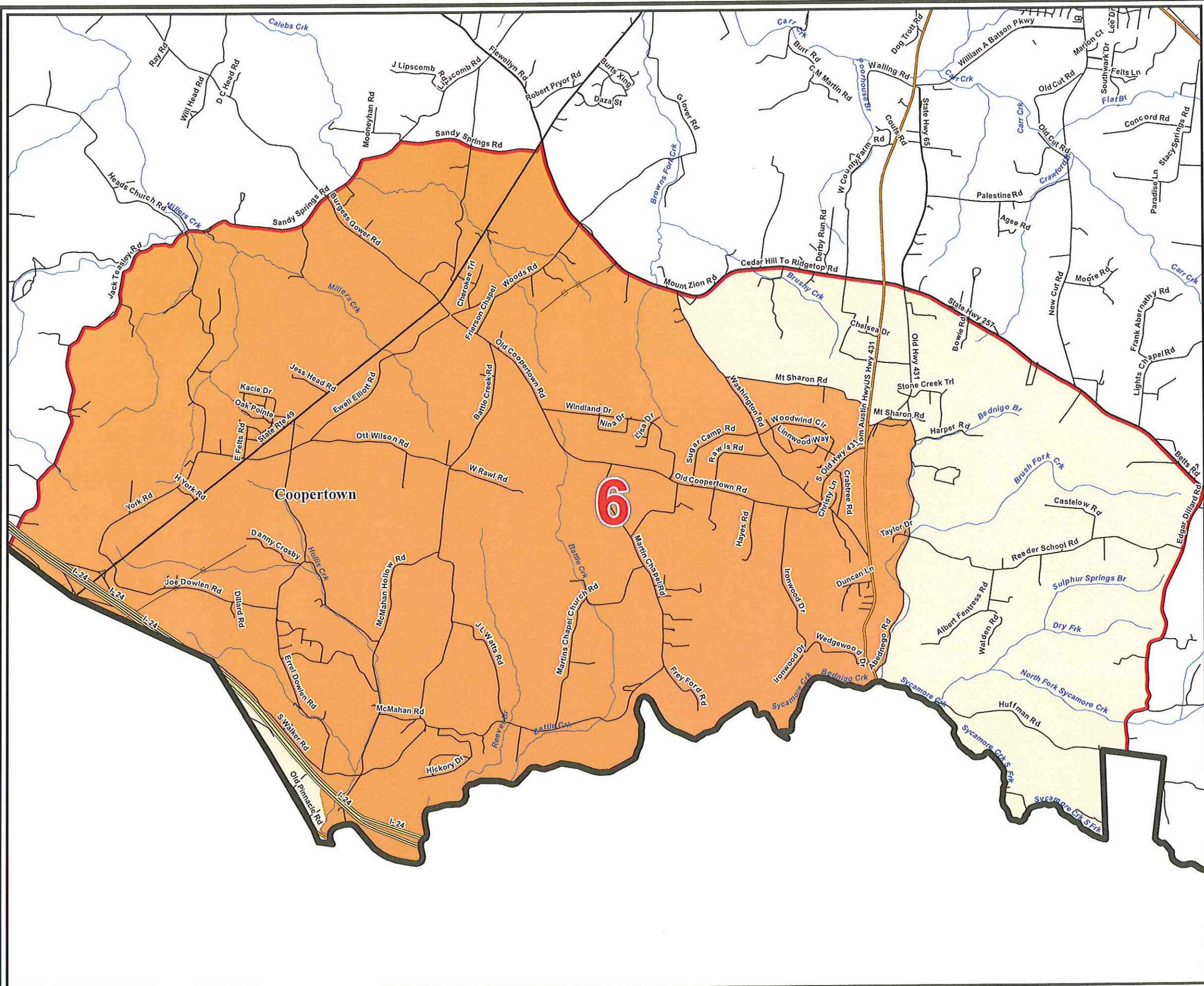


Robertson County Option A County Commission District 6



- Interstates
- U.S. Highway
- State Highway
- Local Roads
- Railroads
- Stream
- Powerline (Incomplete)
- Districts
- Lakes / Rivers
- City, Town**
- Adams
- Cedar Hill
- Coopertown
- Cross Plains
- Greenbrier
- Millersville
- Orlinda
- Portland
- Ridgetop
- Springfield
- White House
- County

